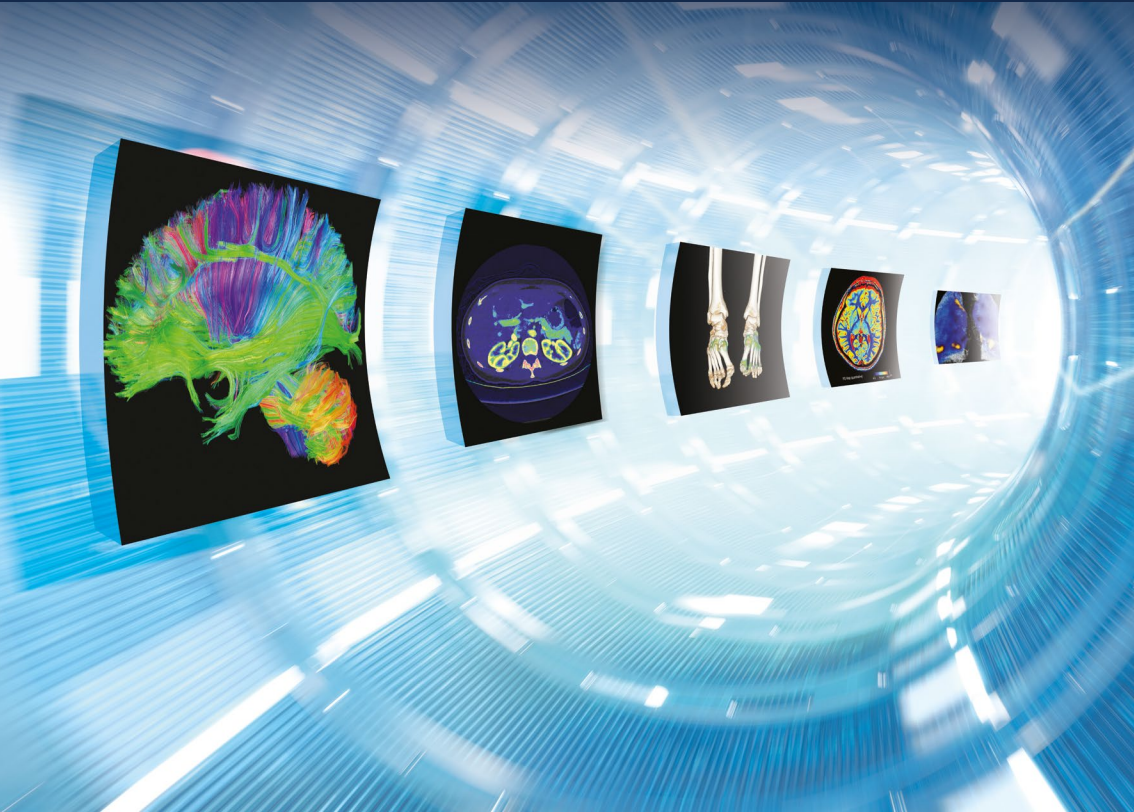


PROGRAMME ECR 2017



Partners for Better Health



THURSDAY,
MARCH 2ND

11:30 – 12:30
ULTRASOUND
LOUNGE

15:30 – 16:15
ABUS
LOUNGE

Ultrasound “meet the expert” sessions

■ **Why and How to perform MRI-US Fusion guided-prostate’s biopsies using GE Volume Navigation?**

P. Puech - Lille, France

Location: GE Healthcare Booth, Ultrasound Lounge.
Meeting point at GE reception desk 5’ before the sessions starts.
The session is open to max 12 attendees.
Pre-registration is required at www.logiqclub.net/ecr2017
and it will be accepted on a ‘first come – first served’ basis with
priority given to LOGIQ Club and ABUS Club members.

■ **Effective screening solution for dense breasts: ABUS as an adjunct to mammography in a high-volume Screening center – the EASY Study**

B. Wilczek - Stockholm, Sweden

Location: GE Healthcare Booth, ABUS Lounge.
Meeting point at GE reception desk 5’ before the sessions starts.
The session is open to max 12 attendees.
Pre-registration is required at www.abusclub.net/ecr2017
and it will be accepted on a ‘first come – first served’ basis with
priority given to LOGIQ Club and ABUS Club members.

FRIDAY,
MARCH 3RD

Ultrasound “meet the expert” sessions

10:30 – 11:15
ABUS
LOUNGE

- **Effective screening solution for dense breasts: ABUS as an adjunct to mammography in a high-volume Screening center – the EASY Study**

[B. Wilczek](#) - Stockholm, Sweden

Location: GE Healthcare Booth, ABUS Lounge.
Meeting point at GE reception desk 5' before the sessions starts.
The session is open to max 12 attendees.
Pre-registration is required at www.abusclub.net/ecr2017
and it will be accepted on a 'first come – first served' basis with
priority given to LOGIQ Club and ABUS Club members.

11:00 – 12:00
ULTRASOUND
LOUNGE

- **Why and How to perform MRI-US Fusion guided-prostate's biopsies using GE Volume Navigation?**

[P. Puech](#) - Lille, France

Location: GE Healthcare Booth, Ultrasound Lounge.
Meeting point at GE reception desk 5' before the sessions starts.
The session is open to max 12 attendees.
Pre-registration is required at www.logiqclub.net/ecr2017
and it will be accepted on a 'first come – first served' basis with
priority given to LOGIQ Club and ABUS Club members.

FRIDAY,
MARCH 3RD

Ultrasound “meet the expert” sessions

15:00 – 16:00
ULTRASOUND
LOUNGE

■ **Shear Wave Elastography for diffuse liver diseases (including experience with LOGIQ E9 XDclear 2.0)**

I. Sporea - Timisoara, Romania

Location: GE Healthcare Booth, Ultrasound Lounge.
Meeting point at GE reception desk 5' before the sessions starts.
The session is open to max 12 attendees.
Pre-registration is required at www.logiqclub.net/ecr2017
and it will be accepted on a 'first come – first served' basis with
priority given to LOGIQ Club and ABUS Club members.

15:30 – 16:15
ABUS
LOUNGE

■ **Screening with Invenia™ ABUS - My personal experience using ABUS as supplemental screening tool in the challenging dense breasts**

A. Vourtsis - Athens, Greece

Location: GE Healthcare Booth, ABUS Lounge.
Meeting point at GE reception desk 5' before the sessions starts.
The session is open to max 12 attendees.
Pre-registration is required at www.abusclub.net/ecr2017
and it will be accepted on a 'first come – first served' basis with
priority given to LOGIQ Club and ABUS Club members.

SATURDAY,
MARCH 4TH

Ultrasound “meet the expert” sessions

11:00 – 12:00
ULTRASOUND
LOUNGE

■ **New ultrasound imaging for liver tumor treatments using Elastography, CEUS, Perfusion, Fusion and intraoperative US**

M. Ernst Jung, I. Wiesinger - Regensburg, Germany

Location: GE Healthcare Booth, Ultrasound Lounge.
Meeting point at GE reception desk 5' before the sessions starts.
The session is open to max 12 attendees.
Pre-registration is required at www.logiqclub.net/ecr2017
and it will be accepted on a 'first come – first served' basis with
priority given to LOGIQ Club and ABUS Club members.

11:00 – 11:45
ABUS
LOUNGE

■ **Screening with Invenia™ ABUS – My personal experience using ABUS as supplemental screening tool in the challenging dense breasts**

A. Vourtsis - Athens, Greece

Location: GE Healthcare Booth, ABUS Lounge.
Meeting point at GE reception desk 5' before the sessions starts.
The session is open to max 12 attendees.
Pre-registration is required at www.abusclub.net/ecr2017
and it will be accepted on a 'first come – first served' basis with
priority given to LOGIQ Club and ABUS Club members.

SATURDAY,
MARCH 4TH

15:00 – 16:00
ULTRASOUND
LOUNGE

Ultrasound “meet the expert” sessions

■ **Ultrasound, a comprehensive solution for hepatology (including early experience with LOGIQ S8 XDclear 2.0)**

I. Sporea - Timisoara, Romania

Location: GE Healthcare Booth, Ultrasound Lounge.
Meeting point at GE reception desk 5' before the sessions starts.
The session is open to max 12 attendees.
Pre-registration is required at www.logiqclub.net/ecr2017
and it will be accepted on a 'first come – first served' basis with
priority given to LOGIQ Club and ABUS Club members.

Data subject to change
Marketing Communications GE Medical Systems
Société en Commandite Simple au capital
de 88.846.785,00 euros
283, Rue de la Minière, 78533 Buc Cedex France
RCS Versailles B 315 013 359
A General Electric company,
doing business as GE Healthcare
©2017 General Electric Company.
JB46288FR

GE Healthcare
Chalfont St.Giles,
Buckinghamshire,
UK

www.gehealthcare.com

